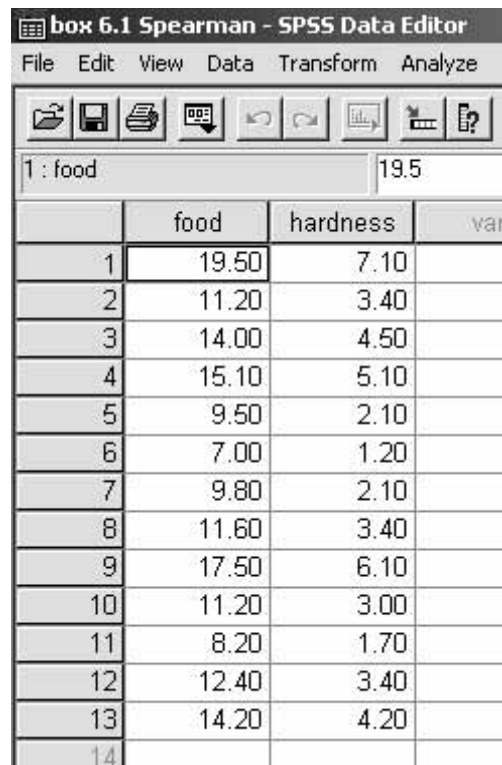


Transfer to 'Data View' using the tabs at the bottom left, and enter the data.



The screenshot shows the SPSS Data Editor window titled "box 6.1 Spearman - SPSS Data Editor". The menu bar includes File, Edit, View, Data, Transform, and Analyze. The toolbar contains icons for file operations and data manipulation. The active data grid has a column labeled "1 : food" with a value of 19.5. Below this, a table with three columns is visible: "food", "hardness", and "var". The data rows are numbered 1 through 14.

	food	hardness	var
1	19.50	7.10	
2	11.20	3.40	
3	14.00	4.50	
4	15.10	5.10	
5	9.50	2.10	
6	7.00	1.20	
7	9.80	2.10	
8	11.60	3.40	
9	17.50	6.10	
10	11.20	3.00	
11	8.20	1.70	
12	12.40	3.40	
13	14.20	4.20	
14			

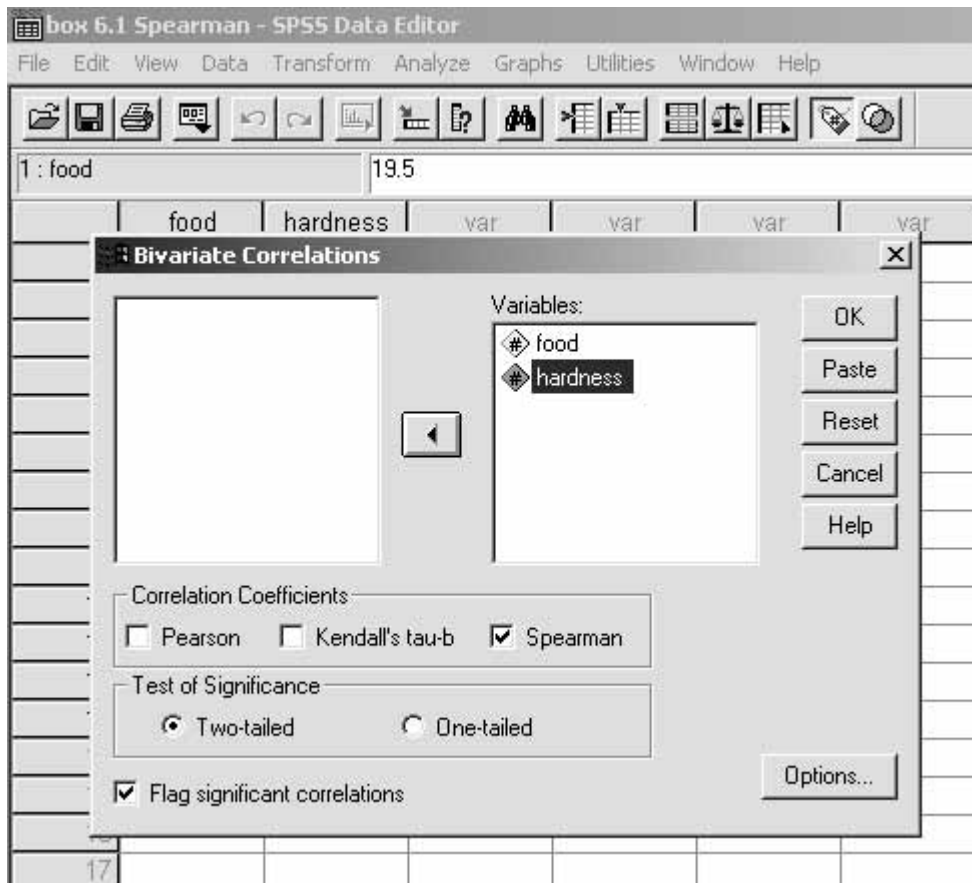
Step 2. Perform the test.

Go to 'Analyze', 'Correlate', 'Bivariate'.

The screenshot shows the SPSS Data Editor window titled 'box 6.1 Spearman - SPSS Data Editor'. The 'Analyze' menu is open, and the 'Correlate' option is selected, which has opened a sub-menu where 'Bivariate...' is highlighted. The data table below shows two columns: 'food' and 'hardness', with 14 rows of data.

	food	hardness
1	19.50	7.1
2	11.20	3.4
3	14.00	4.5
4	15.10	5.1
5	9.50	2.1
6	7.00	1.2
7	9.80	2.1
8	11.60	3.4
9	17.50	6.1
10	11.20	3.00
11	8.20	1.70
12	12.40	3.40
13	14.20	4.20
14		

Click on 'food' to highlight it, then click on the arrow to transfer it across to the 'Variables' box. Repeat for 'hardness'. Make sure that 'Spearman' is selected.



Click on 'OK'. The results will appear in a new window.

Nonparametric Correlations

Correlations

			FOOD	HARDNESS
Spearman's rho	FOOD	Correlation Coefficient	1.000	.983**
		Sig. (2-tailed)	.	.000
		N	13	13
	HARDNESS	Correlation Coefficient	.983**	1.000
		Sig. (2-tailed)	.000	.
		N	13	13

** . Correlation is significant at the 0.01 level (2-tailed).

Step 3. Decide what the results mean.

SPSS computes a complete correlation matrix, so it includes rather meaningless things such as the correlation of 'food' with itself, and performs the correlations both ways ('food' correlated with 'hardness', and 'hardness' correlated with 'food'), which is a bit of a waste of effort for a Spearman test.

The important numbers here are the correlation coefficient of 0.983 for food and hardness (or hardness and food), which is large and positive (as food increases, so hardness increases), and the 'Sig. (2-tailed)', which is effectively zero: this is the p value, and gives the probability that there is no correlation between the test variables. We therefore conclude that there is a positive correlation between 'food' and 'hardness' at better than $p = 0.01$.