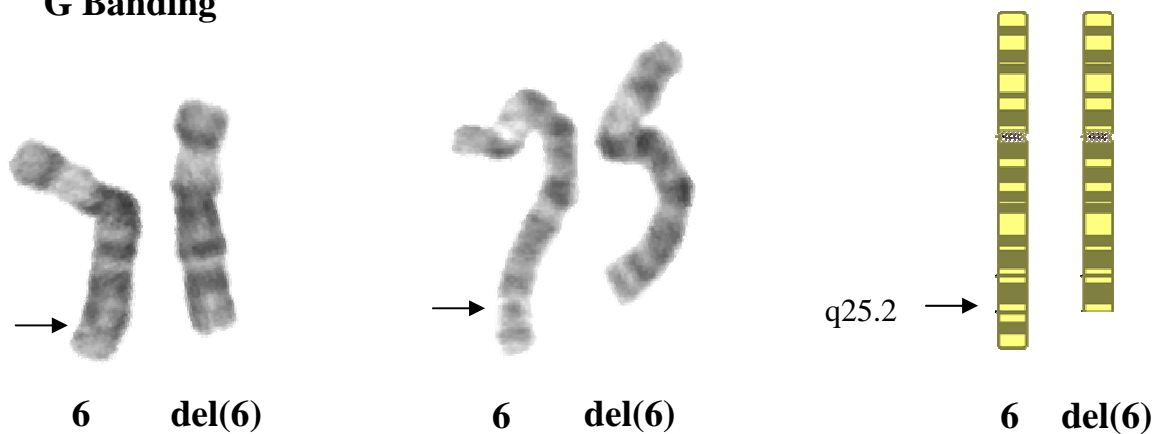


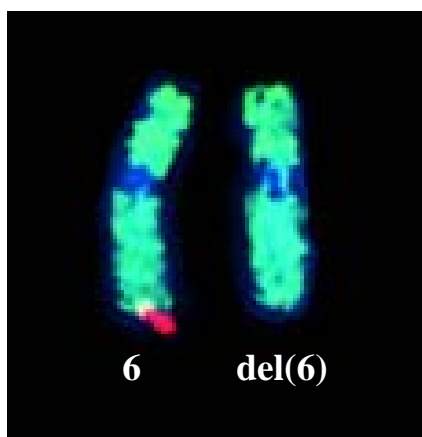
Terminal deletion of the long arm of chromosome 6

Karyotype: 46,XX,del(6)(q25.2)

G Banding



FISH



FISH with whole chromosome 6 paint (green), paints entire length of both chromosome 6 homologues.

FISH with subtelomeric probe for the long arm of chromosome 6 (red) is deleted in the del(6) homologue.