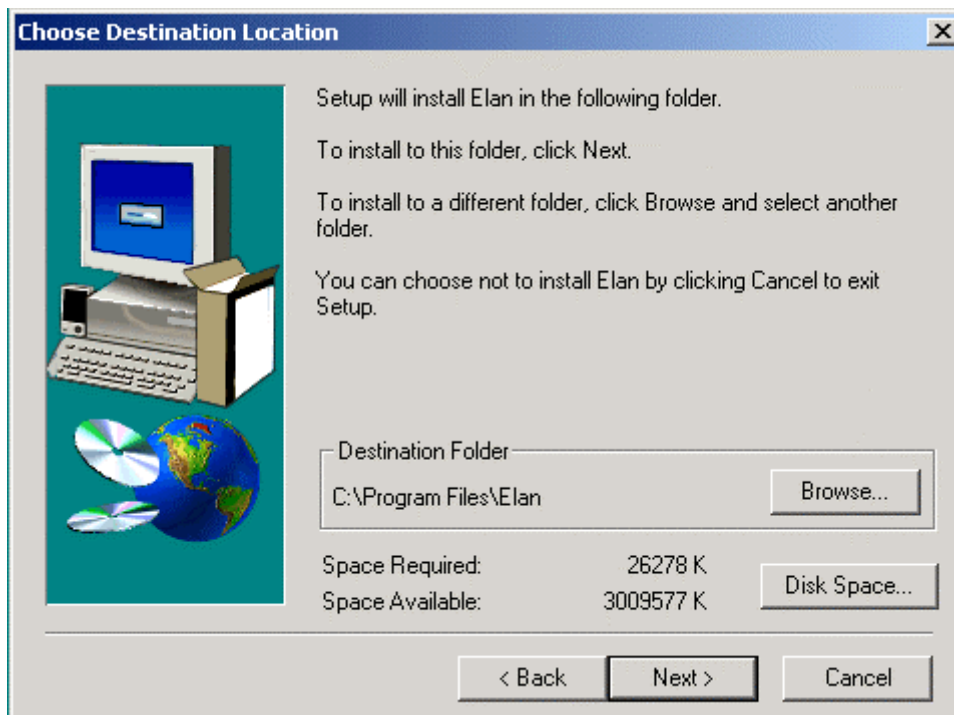


Guide to Installing Edugen products on a Network

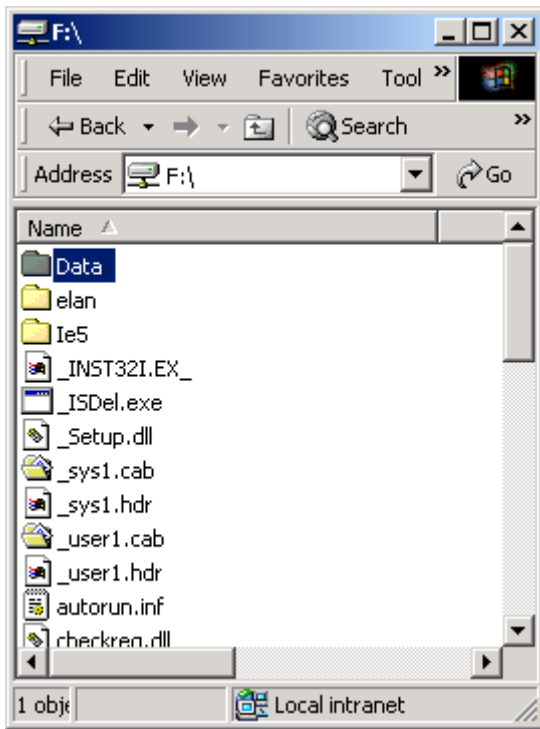
For ease of making this file, we have used *Elan* as an example. Simply change the name of the product, where necessary.

FIRST installation of the program

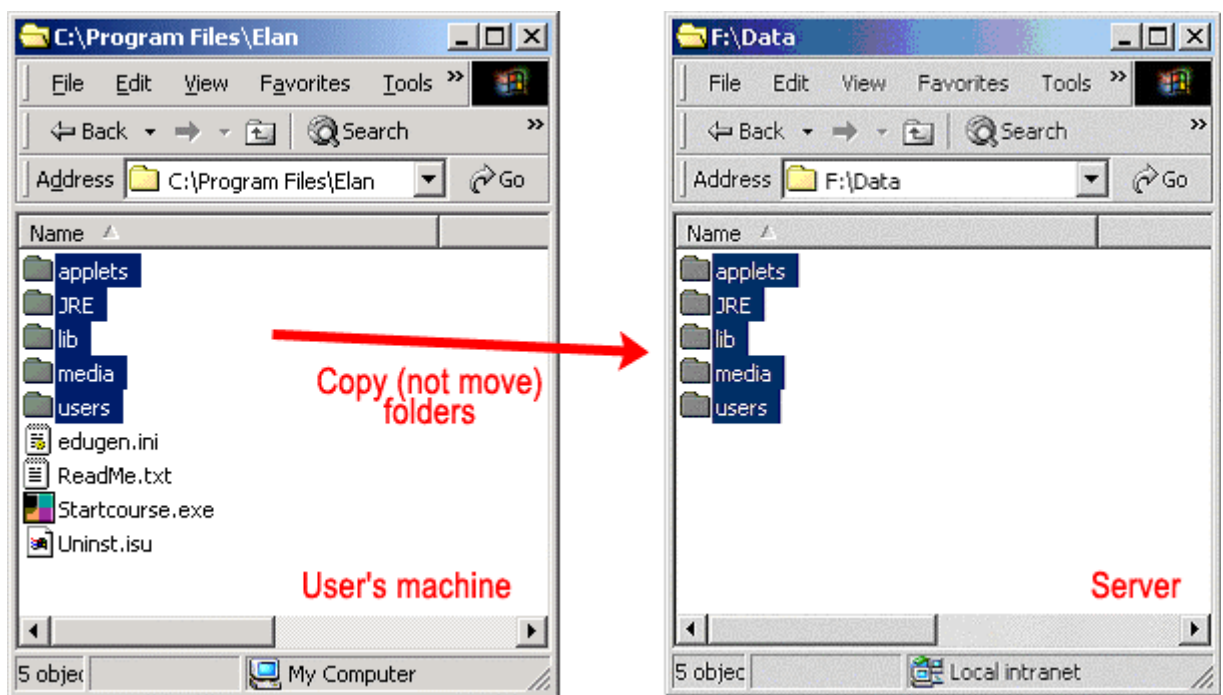
1. Transfer the whole CD (files and folders) to a folder on the server and share the folder with a full access.
2. On a local user's machine, map this folder as a network drive (ie. specify the drive letter for the connection and locate the folder on the server machine). Let us use **letter F** in the following example.
3. On the user's machine, open the network drive (F:\) locate the program folder, then click "go.exe" to install the course on the local machine (specifying the local drive for installation - say, to **c:/Program Files/Elan** directory). Use "browse" if you want to specify a different location than the one shown in the installation window.



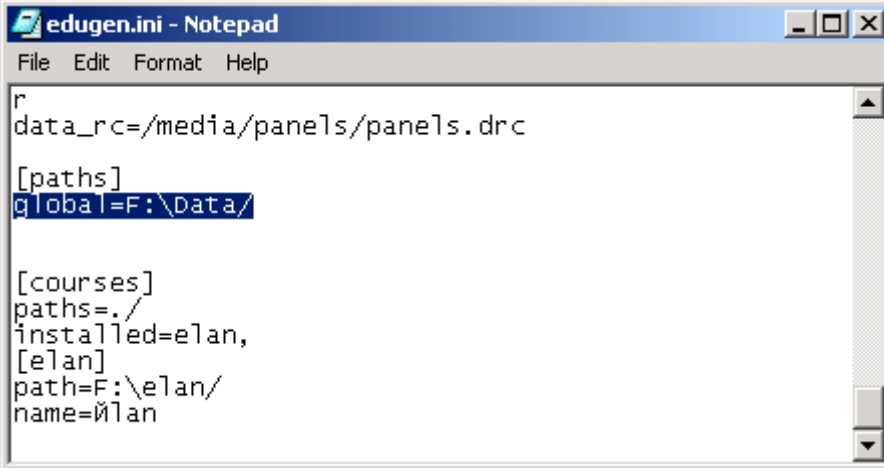
4. Create a folder on the server disk. Call it Data as the example below shows or you can use any other name.



5. Copy (**do not move**) all the folders from the user's **C:\Program Files\Elan** directory into **Data** folder on the server. NOTE - do not move files, only folders as shown.



6. Open **Edugen.ini** file from **c:/Program Files/Elan** directory, then change the global path from **global=C:\Program Files\Elan/** to **global=F:\Data/** Save the file. (The user's data will then be sent to the server folder instead of the local computer disk.)



```
edugen.ini - Notepad
File Edit Format Help
r
data_rc=/media/panels/panels.drc

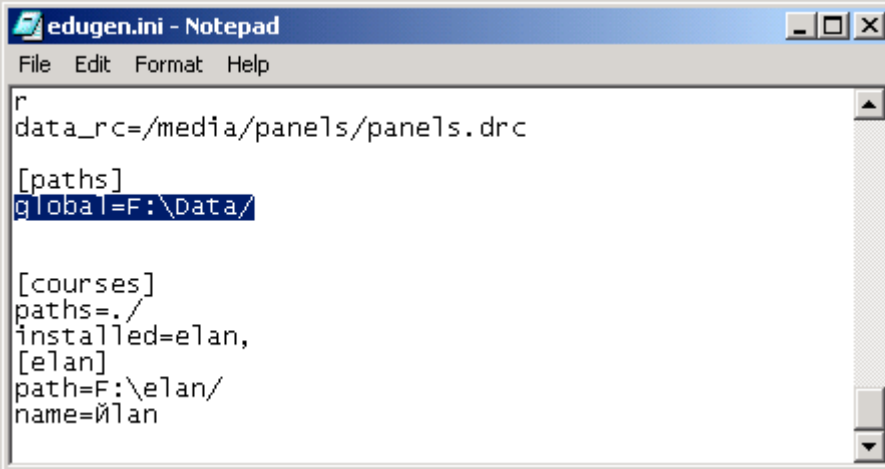
[paths]
global=F:\Data/

[courses]
paths=./
installed=elan,
[elan]
path=F:\elan/
name=Elan
```

7. Run the course by double clicking **Elan** desktop icon.

Installation on subsequent user's machine

1. On the user's machine, map the server folder as a network drive (ie. specify the drive letter for the connection and locate the program folder on the server machine). Let us take use **letter F** as an example.
2. Open network drive then click go.exe to install the course on the local machine (say, to **c:/Program Files/Elan** directory).
3. Open **Edugen.ini** file from **c:/Program Files/Elan** directory (on the local computer after installation is complete) then change the global path from **global=C:\Program Files\Elan/** to **global=F:\Data/** Then save the file. (User data will then be sent to the server folder instead of the local computer disk). Do not copy any files to server.



```
edugen.ini - Notepad
File Edit Format Help
r
data_rc=/media/panels/panels.drc

[paths]
global=F:\Data/

[courses]
paths=./
installed=elan,
[elan]
path=F:\elan/
name=Elan
```

4. Run the course by double clicking **Elan** desktop icon.

NOTE:

1. All user data will now be stored on the server machine and user's should be able to login from different machines once they have established login ID for the first machine.
2. This technique has been tried successfully on a small number of networks but it has not been tested across a wide range of networks and configurations. It is not a guaranteed solution.